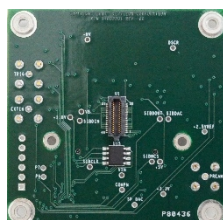


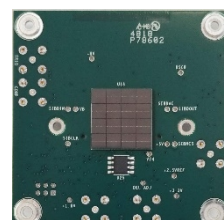
Selection Guide for 16 Channel SiPM & MPPC Sensor Interface Products



SIB616



SIB716



SIB916

Compatible Sensor	ArrayC-30035-16P	S13361-3050AE-04	AFBR-S4N44P163
Sensor Manufacturer	SensL	Hamamatsu	Broadcom
Sensor Type	Silicon Photomultiplier Array	Multi-Pixel Photon Counter Array	Silicon Photomultiplier Array
Number of Channels	16	16	16
Configuration	4 x 4 Array	4 x 4 Array	4 x 4 Array
Array Attachment Method	Socket	Socket	Surface Mount Soldered
Sensor Coupling Circuit	Direct Coupled	Direct Coupled	Direct Coupled
Detector Bias Current Sense	Yes (Common for all Elements)	Yes (Common for all Elements)	Yes (Common for all Elements)
High Voltage Power Supply	On-Board Positive Supply	External Negative Input	External Negative Input
High Voltage Power Supply Interface Circuit	Low Impedance Positive Bias Supply with Current Sense		
Pulse Processing Functions	Preamp / Discriminator with Adjustable Energy Threshold	Common Anode Current Sense with Preamplifier Output Discriminator with Adjustable Threshold	Common Anode Current Sense with Preamplifier Output Discriminator with Adjustable Threshold
On-Board Coincidence Detector	No	No	Yes
Dimensions	57.4 mm x 57.4 mm	57.4 mm x 57.4 mm	57.4 mm x 57.4 mm



Vertilon Corporation has made every attempt to ensure that the information in this document is accurate and complete. Vertilon assumes no liability for errors or for any incidental, consequential, indirect, or special damages including, without limitation, loss of use, loss or alteration of data, delays, lost profits or savings, arising from the use of this document or the products which it accompanies. Vertilon reserves the right to change its products without prior notice. No responsibility is assumed by Vertilon for any infringements of patents or other rights of third parties which may result from the use of its products. No license is granted by implication or otherwise under the patent and proprietary information rights of Vertilon Corporation.