

Description

The PhotoniQ Model IQSP418 is an economical multi-channel data acquisition system designed to offer scientists, engineers, and developers an off-the-shelf solution for data collection from multiple charge-based sensors. Implemented as a stand-alone laboratory instrument with a PC interface, the PhotoniQ is used for charge integration and data acquisition from individual photomultiplier tubes, avalanche photodiodes, and silicon photomultipliers (SiPM). Available in a standard configuration of two input channels, the IQSP418 can be expanded in the factory or field to up to eight parallel channels. Flexible, intelligent triggering and acquisition modes allow the unit to reliably capture event or image data using sophisticated data acquisition techniques. The IQSP418 is fully configurable over its USB 2.0 port using an included graphical user interface. Continuous high speed data transfers to the PC are handled through this interface, or for custom applications through the provided Windows DLL set.

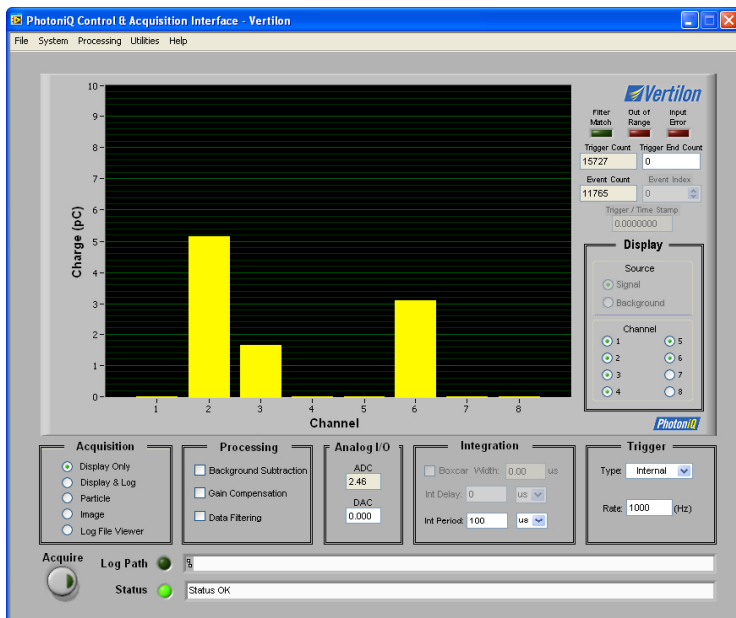
Applications

- Bioaerosol Detection and Discrimination
- PET and SPECT
- Confocal Microscopy
- Flow Cytometry
- Fluorescence Spectroscopy
- Spatial Radiation Detection
- Analytical Chemistry
- Particle Physics
- Piezoelectric Sensor Array Readout
- DNA Sequencing
- Silicon Photomultipliers (SiPM)



Features

- Two synchronously gated integrator/data acquisition channels optionally expandable to up to eight integrator/acquisition channels
- 96 dB dynamic range (16-bit resolution)
- Particle analysis with 6.0 usec event pair resolution, image acquisition at rates up to 150,000 pixels/sec
- Single photon sensitivity when used with typical PMTs and SiPMs detectors
- Intelligent triggering supports edge, internal, level, and boxcar modes
- Advanced triggering capability supports pre-triggering, event based, and cross bank
- Flexible control of integration parameters such as delay, period, or external boxcar
- Two data acquisition modes optimized for particle analysis and scanned imaging applications
- Optional 2,000,000 or 4,000,000 pixel buffer available for high speed imaging applications
- Real-time data discrimination, channel gain normalization, and background subtraction
- Programmable filtering for real time detection of predefined energy levels or spectrums
- General purpose output linked to filter function
- Compatible with commonly available multi-anode PMTs, silicon photomultipliers, and avalanche photodiode arrays
- On board user-programmable general purpose DAC and ADC for detector bias control and monitoring



Software Features & Functions

- Graphical User Interface (GUI) for menu driven data acquisition, configuration, and status
- Real time display shows total integrated charge level across all channels for each captured event or pixel
- Integrated log file viewer permits on-screen viewing of logged event data
- High speed event counter
- Image acquisition can be programmed to acquire for a preset number of pixels
- Trigger stamping and event time stamping with 100 nsec resolution
- USB 2.0 interface supports high transfer rates
- General purpose programmable digital output to control external devices
- Included Microsoft Windows DLLs for interface to custom user applications

Included Accessories and Software

The IQSP418 comes enclosed in a rugged, EMI-shielded, instrument case and is shipped with the following standard components and software:

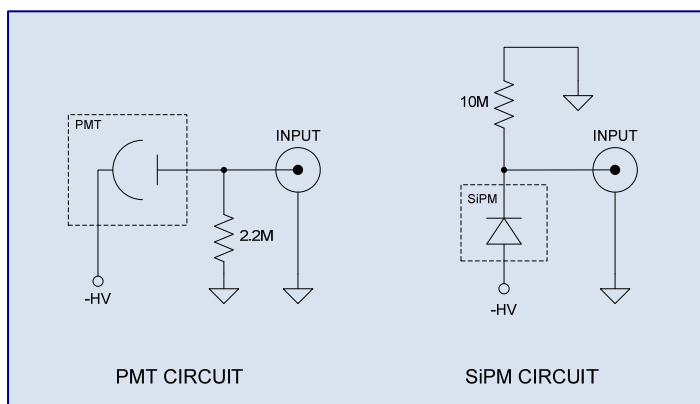
- PhotoniQ Control and Acquisition Interface Software CD-ROM
- DC power supply (+5V, 2A) with power cord
- USB 2.0 cable

Options

The IQSP418 can be ordered with the following hardware options:

- XCH401: Extra input channel - Up to six can be added
- MEM032: Memory upgrade - 2,000,000 event image buffer
- MEM064: Memory upgrade - 4,000,000 event image buffer

Recommended Sensor Interface Circuits



Specifications*	
Description	Specification
Number of Channels	2, expandable to 8
Resolution	16 bits
Dynamic Range	96 dB
Equivalent Input Noise Charge	30 fC RMS typ.
Maximum Input Signal	1462 pC
Channel-to-Channel Crosstalk	-84 dB typical, -80 dB max.
Input Bias Current	±40 pA typical, ±150 pA max.
Minimum Event Pair Resolution (MEPR)	6.0 usec max.
Maximum Trigger Rate (MTR)	150 KHz
8 Channel Sustained Average Event Rate (SAER)	150,000 events/sec
Power Consumption	4.5 Watts
Width	9.843 in. (250 mm)
Height	3.346 in. (85 mm)
Length	10.236 in. (260 mm)

* See PhotoniQ User Manual for details



Vertilon Corporation has made every attempt to ensure that the information in this document is accurate and complete. Vertilon assumes no liability for errors or for any incidental, consequential, indirect, or special damages including, without limitation, loss of use, loss or alteration of data, delays, lost profits or savings, arising from the use of this document or the product which it accompanies.

Vertilon reserves the right to change this product without prior notice. No responsibility is assumed by Vertilon for any infringements of patents or other rights of third parties which may result from its use. No license is granted by implication or otherwise under the patent and proprietary information rights of Vertilon Corporation.

© 2010 Vertilon Corporation, ALL RIGHTS RESERVED

PS2716.1.2 Nov 2010